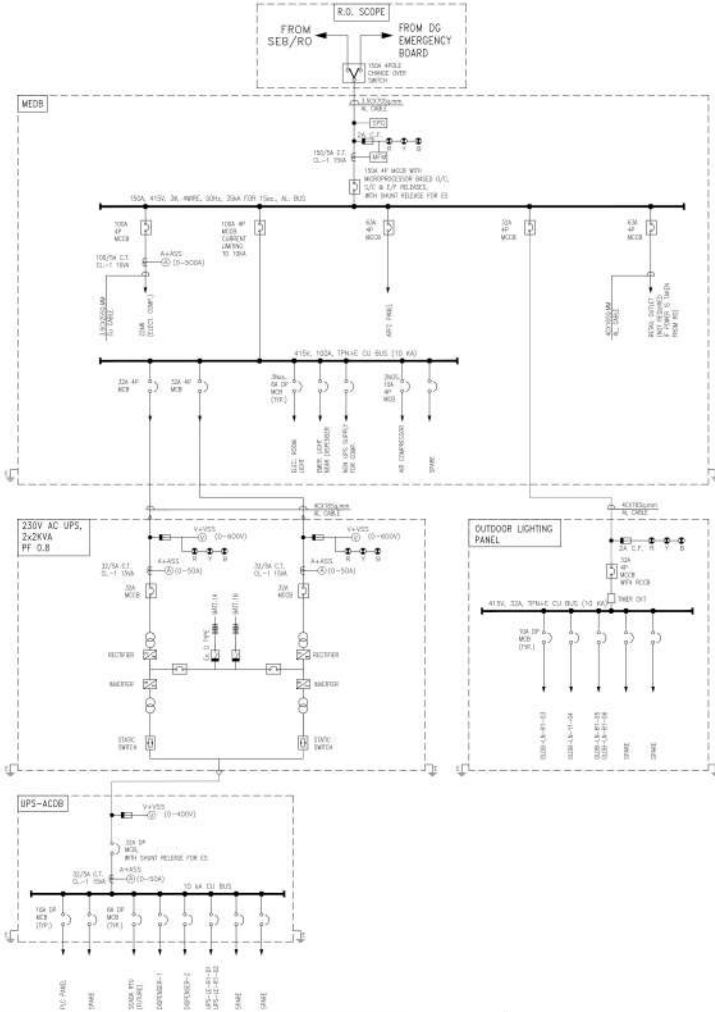


## Replies to Pre-Bid Queries

<b>Tender No. : GSL/REPL/006/C-DBS</b>			<b>Date / Time of Pre- Bid Meeting: 23/12/22</b>
<b>Name of Work : ANNUAL RATE CONTRACT FOR CNG DBS STATION CONSTRUCTION AT CHURU, MANDI, PAURI GARWAL (RISHIKESH) &amp; CHAMPAWAT GA</b>			
<b>S. No.</b>	<b>Tender Clause No. / Annexures</b>	<b>Bidders Comments / Queries</b>	<b>SGL/ REPL Reply</b>
1	Technical SLD Drawing	Please provide technical details or SLD for electrical panels.	Refer Anexure-i and Anexure-ii (Typical P&ID, may vary from site to site)



- NOTES**
1. ALL ELECTRICAL EQUIPMENT SHALL BE SPECIFIED IN COMPLIANCE WITH LOCAL CLIMATIC CONDITIONS.
  2. THE METERS SHALL BE DIGITAL MULTIFUNCTION METERS.
  3. THIS DRAWING SHALL BE STUDIED ALONG WITH ALL OTHER RELATED ELECTRICAL DOCUMENTS.
  4. ACTUAL SIZE OF CABLE SHALL BE DECIDED ON BASIS OF CABLE SIZING CALCULATION AND APPROVED CABLE SPECIFICATIONS.
  5. OUTDOOR ELECTRICAL MATERIAL SHALL BE PROVIDED IN COMPLIANCE WITH THE RELEVANT HAZARDOUS AREA CLASSIFICATION.
  6. AMMETER AND VOLTMETER SHALL BE DIGITAL TYPE WITH BUILT IN SELECTOR SWITCH.
  7. ALL INDICATING LAMPS SHALL BE LED TYPE.
  8. NO ARMED SHALL PROVIDE THE INCOMER CABLE UP TO ELECTRICAL DISTRIBUTION BOARD (EDB).
  9. NEUTRAL CATH BUS SHALL BE PROVIDED NEAR BY DATA PTE.

**LEGEND**

	AMMETER (COMPRESSION TYPE)
	CURRENT TRANSFORMER
	MULTIFUNCTION METER
	FUSE
	3-PHASE TRANSFORMER WITH 3-PHASE VOLTAGE STABILIZER
	VOLTAGE SELECTOR SWITCH
	RECEPTACLE
	BATTERY
	STATIC SWITCH
	INTERLOCK
	CHARGE OVER SWITCH
	VOLTMETER
	EXPLOSION PROOF FUSE BOX
	SURGE PROTECTION DEVICE

**ISSUED FOR APPROVAL**

NO.	DATE	BY	FOR

**SINGLE LINE DIAGRAM FOR CNG-FILLING STATION (DBS)**

REV.	DATE	BY	FOR

Resonance Power Systems Pvt. Ltd.

